

Dear customers

July 2018  
NISSEI CORPORATION  
Gearmotor Division

## Notice regarding standardization of tapped output shaft on parallel shaft

Thank you very much for your continued support.

We would like to inform that in specific types of parallel shaft, tapped output shaft will become standard as shown below.

### <Applicable models>

GTR MID, GTR MINI, GTR eco, GTR AR series

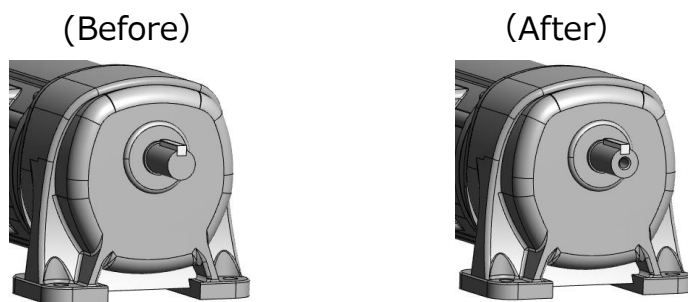
└ Parallel shaft reducer : Frame No. 18, 22, 28, 32, 40, 50

※Excluding some models. For details, refer to the next page.

As for the right angle shaft, the standard is 'Not tapped'

### <Details and effective date>

Changing output shaft with tapped output shaft.



Shaft diameter (Frame No.)	Size×Pitch×Depth	Effective date
18	M 6×1.0 ×15 ℓ	Shipment from August 6, 2018
22	M 8×1.25×20 ℓ	
28	M 8×1.25×20 ℓ	
32	M10×1.5 ×25 ℓ	Shipment from September 3, 2018
40	M10×1.5 ×25 ℓ	
50	M12×1.75×30 ℓ	

※Please contact us for specifications other than the above.

## <Applicable models>

Series	Applicable models
<b>GTR MID SERIES</b> Induction gearmotor 0.1kW~2.2kW	■ G3 series (Parallel Shaft) G3L, G3F : Frame No.18~50 Reduction Ratio 1/5~1/1200 G3K : Frame No.18~32 Reduction Ratio 1/5~1/1200 ※Excluding water-resistant type (shaft material SUS420J2)
<b>GTR MINI SERIES</b> Induction gearmotor 15W~90W	■ G type (Parallel Shaft) GL, GF : Frame No.22~40 Reduction Ratio 1/300~1/1800 GK : Frame No.22~32 Reduction Ratio 1/300~1/1800
<b>GTR-eco</b> IPM gearmotor 0.1kW~2.2kW	■ G3 (Parallel Shaft) G3L, G3F : Frame No.18~50 Reduction Ratio 1/5~1/1200 G3K : Frame No.18~32 Reduction Ratio 1/5~1/1200
<b>GTR -AR</b> Variable speed gearmotor APQ AC servo gearmotor AEF 0.1kW~0.75kW	■ AG3 (Parallel Shaft) AG3L, AG3F : Frame No.18~40 Reduction Ratio 1/5~1/200 AG3K : Frame No.18~32 Reduction Ratio 1/5~1/200 ※Excluding 0.1kW, Frame No. 15, Reduction Ratio 1/5~1/60
<b>GTR -AR</b> Battery powered type 0.1kW~0.4kW	■ VG (Parallel Shaft) VGL : Frame No.18~32 Reduction Ratio 1/5~1/200 VGK : Frame No.18~32 Reduction Ratio 1/5~1/200 ※Excluding 50W Frame No.12, 0.1kW Frame No.15 Reduction Ratio 1/5~1/60
<b>GTR -AR</b> High-precision reducer for servo motor 100W~2000W	■ AG3 (Parallel Shaft) AG3LZ, AG3FZ : Frame No.18~50 Reduction Ratio 1/5~1/200 AG3KZ : Frame No.18~32 Reduction Ratio 1/5~1/200 ※Excluding APG (Parallel Shaft)

※We will announce the catalog and external dimension data through our website as soon as they are ready.

### ■ Contact us

NISSEI CORPORATION

•Overseas Sales : +81-566-92-5312